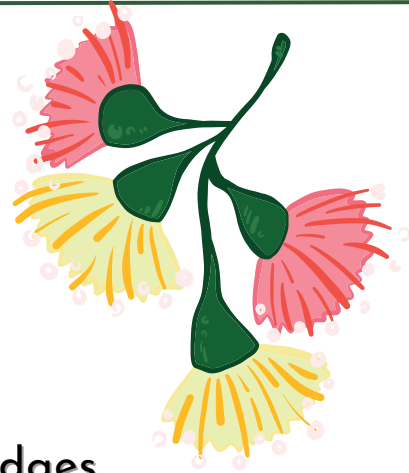


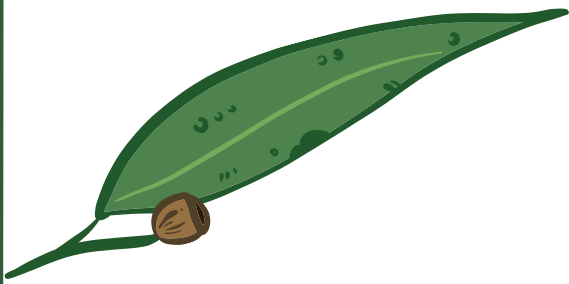


ANNUAL REPORT 2023





Doubleview House acknowledges
the Traditional Custodians of this
land, the Wadjak people of the
Nyoongar nation, and pays
respect to the Elders past and
present for they hold the
memories, the traditions, the
culture and hopes of Aboriginal
Australia.



CONTENTS

1. Contents
2. Our Mission
3. Our Values
4. Our People
5. Chairperson's Report
7. Treasurer's Report
9. Centre Manager's Report
12. Partners, collaborations and special thanks
13. Overview of Doubleview House
14. Infographics
16. Repair Café

Draft Auditor's Letter

Special Purpose Financial Report

Budget for year ended 30 June 2024



OUR MISSION

To be a vibrant, welcoming community organisation facilitating individuals, families and groups to share, belong and grow.

Doubleview House is a not-for-profit organisation governed by a volunteer Management Committee, required as per Associations Incorporations Act 2015. We receive funding through the Empowering Communities Program (Department of Communities).

The outcomes we look to achieve

- People have social connections within their community
- People participate in their local communities
- People learn new skills and knowledge
- People contribute to their communities and
- People feel safe in their communities.



Supported by



Government of Western Australia
Department of Communities



OUR VALUES

Inclusion and Diversity

We are committed to inclusion across culture, age, gender, religion, identity and experience.

Place-based approach

We focus our efforts on identifying and addressing needs at a local community level.

Flexibility

We are flexible, dynamic and proactive as the community evolves.

Sustainability

We are environmentally sensitive and strive to support and promote sustainable practices.

Integrity

We act with integrity, openness and responsibility in all we do.

Affordability

We aim to remove financial status as a barrier to participation by providing our services and facilities at a minimal cost to the community.

Stability

Sustaining long-term financial viability is a consideration in all our planning and decision making.

OUR PEOPLE

Management Committee

Executive Members

Chairperson	Glenda Yow
Vice Chairperson	Liz Sikka
Secretary	Helen Axton
Treasurer	Annamarie Desfosses

General Members

Naomi Bellworthy	
Georgia Bradbury	
Lynn Chann	
Rhianne Malaspina	Resigned
Jamie McDonnell	Resigned
Janine Sheen	Resigned

Staff

Centre Manager	Chenoa Walsh
Programs Coordinator	Fran Lockyer
Creche	Kathy Wear



CHAIRPERSON'S REPORT

Doubleview House has continued to provide a valuable service to the local community over this past year, despite a very challenging economic environment. Now, more than ever, I believe our community house has an important part to play within the local community bringing people together.

Late last year, we installed our very own mud kitchen in the outdoor playground just in time for our annual Playgroup Christmas Party. The Christmas party was again a big hit with the Cuddly Animal Farm and a visit from Santa delighting the children. We collaborated with Transition Town Stirling on their sustainable fair- making reusable bunting and promoting the Toy Library and our new sustainable initiative- loan of reusable party items.

We saw our course room have a much-needed update, turning it into a sun filled, calm, and inviting space. It also saw the retirement of some vintage trapezoid tables, for a more user-friendly option. Our centre also had a lighting update, including lighting of our beautiful mural on the east and west facing walls.



CHAIRPERSON'S REPORT

A small army of committee volunteers saw us run a very successful Bunnings sausage sizzle as a fundraiser, raising \$1,766 for resources at the house. It also provided the committee with an opportunity to promote what Doubleview House has to offer to members of the local community.

A similar army lead by our wonderful Doubleview house staff Chenoa and Fran saw us support the Centre for Women's Safety and Wellbeing purple bench project. Many people got involved in painting the bench purple, which was kindly donated by Bunnings Innaloo, to honour all victims killed and affected by family and domestic violence.

May saw the house become a hive of activity, planning and running a Mystery Picnic to increase our community engagement and collaborate with local businesses. Following on from a successful partnership with Ngala, May also saw the committee start the planning for our own supported playgroup, Baby Bugs.

Glenda Yow, Chairperson
12/9/2023



TREASURER'S REPORT

Westpac Business Cash Reserve: \$121,824

Westpac Community Solutions: \$10,937

I have done a review of the audit performed by Australian Audit with the Centre Manager, Chenoa, and we met together with Chassey from Australian Audit to discuss.

While there was an increase in revenue, which can be mostly attributed to fundraising, there has been a larger increase in expenses.

In this Financial Year, we recorded a loss of approximately \$9,000, this loss was anticipated earlier in 2023. Measures were taken to try to minimise the loss, including fundraising and increasing room hire, as well as trying to cut a few expenses.

As this is our second year in a row incurring a loss, I must urge the committee to explore new revenue streams as the current funding will not be enough to break even or turn a profit. Unfortunately, the funding we receive has not kept up with inflation with only a 3.5% increase compared to the previous year and it is crucial to act this financial year as I do not believe cost cutting is viable nor do I believe it would be impactful enough.

I suggest the committee look into further grant opportunities, particularly those that could ease some of the expenses of our regular operations. Fundraising should be considered, as well as ensuring that the courses and workshops we run are priced appropriately, turning a profit when suitable and certainly not running at a loss.

TREASURER'S REPORT

Our main funding agreement, the Empowering Communities Funding, expires in 2024. We've been told there is a possibility that the funding will rollover to new contracts; however, if this is not the case then the committee will need to search urgently for other funding. The significant cash reserves that Doubleview House has will ensure that the house does not cease being a going concern should the funding be discontinued; however, the current reserves would last just under a year with current expenses. It would be wise to hold on to these cash reserves until the new funding contract is through, and then it could be discussed if and how much of the reserves could be spent in the future.

Going into the new financial year, it will be important to focus on new streams of revenue so that we can ensure the viability of Doubleview House. If there are grant opportunities that are applicable to our mission, we will need to allocate resources to apply for these as it is a timely process; however, it could be a great opportunity to get ourselves in a better financial situation.

Annamarie Desfosses, Treasurer
12/9/2023



CENTRE MANAGER'S REPORT

The new committee has brought with it a refreshed outlook in the operation of the centre. This year we focussed on our connection to families and ways to empower the community through



participation and social connection. The planning meeting in February gave the opportunity to share fantastic ideas and map out the year ahead. Our chairperson Glenda Yow led a small but proactive committee.

In the 6 months from July 2022, we held 12 workshops. Many were Christmas themed. For our annual wreaths workshop we had over 30 enquiries from the community. It is great to be able to offer these tasters at an accessible cost. Special thanks to the generosity of our volunteer course facilitators Liz Sikka, Annamarie Desfosses, Kate Langdon and Sally MacDonald.

Playgroups have also been steadily increasing in 2023. From February to June 2022 there were 685 parents and 755 kids attending. In the same period for 2023, there were an additional 41 parents and 187 kids. From July 2023, 31 new families have joined. It has been great to see families returning to the centre committing to regular playgroups and forming strong connections.

Taste of Doubleview: Mystery Picnic was held over Neighbourhood House Week in early May. We had 11 couples solve clues and discover local businesses located in the heart of Doubleview. The feedback was positive, with many of those attending new to the centre and said they would definitely do it again.

CENTRE MANAGER'S REPORT

Our main funding agreement received through the Department of Communities, Empowering Communities Program is due to expire on 30 June 2024, the Department commenced their re-commissioning process in March. The most likely outcome will be that existing agreements will be rolled over with CPI increase applied to the funding.

As discussed in the Treasurer's report, this funding alone will not allow us to operate as a going concern. This was raised during the year and the committee has made efforts to alleviate, with Bunnings Sausage Sizzle raising over \$1,700 and review of operational costs. We will continue our focus on new grants and collaborations with other community organisations to access grants that allow allocation of expenses that we already incur or in-kind contributions such as volunteer hours to reduce burden on our main funding.

Our committee has done an excellent update of our course and creche rooms, with solid efforts to increase our room hire revenue. Regular room hirers remain steady, our programs coordinator Fran facilitates relationships with our hirers and potential hirers. The Child and Adolescent Health Services will be returning in November with weekly full day hire.

We were pleased to be able to contribute to Transition Town Stirling's (TTS) events during the year. TTS is an entirely volunteer led community organisation. Part of a worldwide movement of communities coming together to reimagine and rebuild our world. It was great to be involved with such a wonderful group passionate about helping locals find new ways to live in a more sustainable way. Our talented treasurer Annie ran a cake pop making workshop. We launched our reusable party basket, with a DIY bunting table. For the winter event, we facilitated a visible mending workshop with talented Elise from Hoop Hoop Hooray. We do hope that we are able to contribute and work together in the future.

CENTRE MANAGER'S REPORT

We received a microgrant thanks to Linkwest, Loftus Community Centre, and EEO Equal Opportunity Specialists for \$300 to install a purple bench. This is a prominent place-based initiative which honours victims killed as a result of Domestic Family Violence, raises awareness of DFV in the community and provides the details of crisis phone lines that can provide assistance. Bunnings Innaloo donated a beautiful bench which allowed us to produce a purple bench within the limited grant funds.

After 5 successful years, Drama Stars funded by Ngala Parenting Connections WA is no longer offered at Doubleview House. Ngala is also a Not for Profit and required to diversify their reach and are now offering this in the northern corridor of the Perth Metropolitan area. Out of this we have established a connection with Cheryl Marron, business owner of Drama Stars WA. We will look to offer a series of one-off events as a trial for a program at a future point.

Unfortunately, there was flooding in June to the South entrance. This is an ongoing issue and we have been advised by City of Stirling that this should be addressed in the current financial year. Major plumbing works have been scheduled for the first week of October.

As we go into the new year, we turn our focus to funding options, collaborations and continuing to build strong families in our area.

Thank you to our wonderful creche worker Kathy Wear. She is fantastic with the kids, and we value her patience and flexibility. Fran and I would also like to express our sincere gratitude to all our dedicated volunteers, without the generous contributions of your time and knowledge, our achievements would not have been possible.

Volunteers do not necessarily have the time; they just have the heart.
Elizabeth Andrew

PARTNERS, COLLABORATIONS AND SPECIAL THANKS

Doubleview House would like to extend its thanks and appreciation to the following organisations and individuals, for their support and contribution.

Bunnings Innaloo

City of Stirling

Deputy Mayor Stephanie Proud

Girl Guides Doubleview

Linkwest

Ngala Parenting Connections WA

Playgroup WA

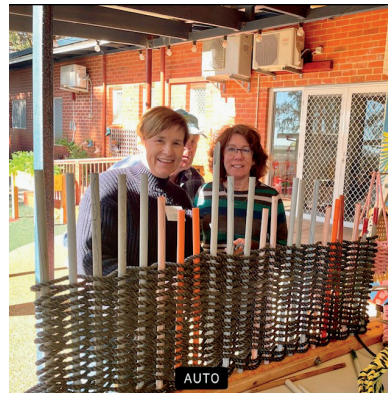
Scarborough Library

Scarborough Toy Library

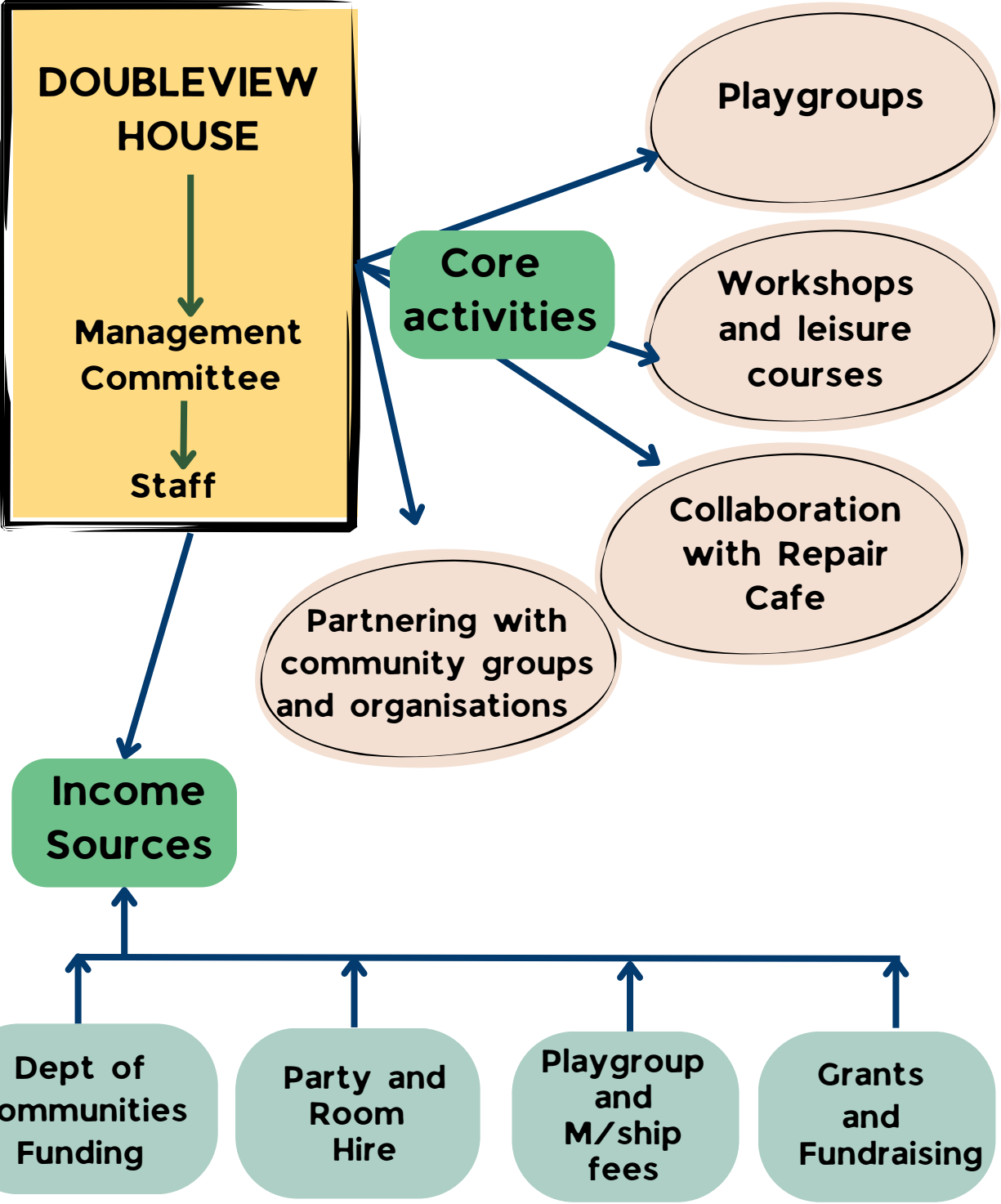
Stuart Aubrey MLA

The Bend in the Road

Transition Town Stirling



Overview of Doubleview House



INFOGRAPHICS

February - June 2023

2,028 people
came through
our Community
Centre



119 playgroup sessions

7 Playgroups

67 playgroup
families

31 new playgroup
families from July
2023



INFOGRAPHICS

Repair Cafe

4

Repair Cafes (every second Saturday of the month except Dec and Jan)

273

people attended, including volunteers

1,400

items repaired since launching in Sept 2018



Courses and Events

342

people attended courses, workshops and events

7

workshops and events were organised by Doubleview House

5

collaborative courses and events were held at Doubleview House

DOUBLEVIEW REPAIR CAFE



Repair Café Doubleview is a community initiative with support of Transition Town Stirling and Doubleview House that promotes the repair of household items instead of tossing them out. It's also about encouraging people to learn the 'how to' of repairing and building community connections along the way.

Members of the community are invited to bring broken household items to the Repair Café to be fixed with the help of our volunteer repairers.

All repairs are made free of charge. Donations are always welcome!

Items we repair (plus many more!)

Clothing / textiles

Low voltage electrical appliances (with an adapter or battery operated)

Small furniture / wooden objects

Bicycles

Device help (phones, laptops)

Gluing and other similar repairs

Sharpening knives, scissors and gardening tools



DOUBLEVIEW REPAIR CAFE

Repair Cafe also offer recycling - bring along your:

Clean plastic bottle tops (all types)

Oral/dental care products (including toothbrushes, toothpaste tubes, floss containers and Piksters)

Disposable razors

Used pens, including Sharpies

Where did the Repair Café start?

The Repair Café movement began in 2009 in the Netherlands, by journalist Martine Postma. There are now 1,000s of Cafes across the world, in more than 30 countries.

The focus of the Repair Cafes is to:

- reduce the number of items going to landfill, and the amount of energy wasted in making and transporting new goods.
- up-skill people in the art of repair.
- save money for individuals who can continue to use their possessions and reduce landfill costs for local governments.
- build community connections and resilience.

Discover more:

If you'd like to know more about the Repair Café movement visit:

<https://repaircafe.org/en/>

