



# *Doublerview House*

MURAL

Expression of Interest (EOI)  
Artist Information  
EOI CLOSSES 6 SEPTEMBER 2021

## Introduction

Doubleview House is seeking to commission a mural to increase vibrancy and visibility of the centre and the adjoining Munro Reserve.

The mural is intended as a means for attracting new members and creating a visual presence in the wider community, particularly as viewed from Scarborough Beach Road.

A professional artist or group of artists will be engaged to develop, design and produce public art project over multiple surfaces of the existing Doubleview House building.

The overall aim of the work is to promote a sense of the centre as an engaging and welcoming meeting place that sits harmoniously in the context of Tuart trees and active public open space.

## Doubleview House Background

Doubleview House is a not-for-profit community centre that has been operating for over 30 years. It is governed by a Volunteer Management Committee in operation with the Centre Manager and Programs Coordinator. The majority of our funding is received through the Empowering Communities Program delivered by The Department of Communities.

Our vision is to be an inclusive, welcoming space available for local community to share, belong and grow.

See our website [www.doubleviewhouse.com.au](http://www.doubleviewhouse.com.au) to learn more about us.

## Important details

<b>Budget</b>	up to \$15,000 (including artist's fee and all costs)
<b>EOI closes</b>	6 September, 2021
<b>Project completion</b>	31 March, 2022
<b>Contact</b>	<a href="mailto:info@doubleviewhouse.com.au">info@doubleviewhouse.com.au</a> 9446 2757

## Site information

Doubleview House is a single storey, red-brick building of approximately 1970s era located at the corner of Hancock Street and Scarborough Beach Road in Doubleview. It adjoins to Munro Reserve, a public open space containing a fenced playground, grassed area occasionally used for events with significant remnant vegetation (primarily tuart trees). It is also part of a prominent site at the top of Scarborough Beach Road, also locally known as part of "The Bend in the Road". See Attachment 1 for further information regarding the location.

The mural must address the Southern Façade and may also address the other significant façades:

1. Southern Façade fronting onto Munro Reserve and Scarborough Beach Road.
2. Eastern Façade fronting onto the internal carpark between Doubleview House and Munro Reserve.
3. Western Façade facing Hancock Street

Please note that measurements are given with firstly the width and then height and sketches are not to scale.

## Southern Façade

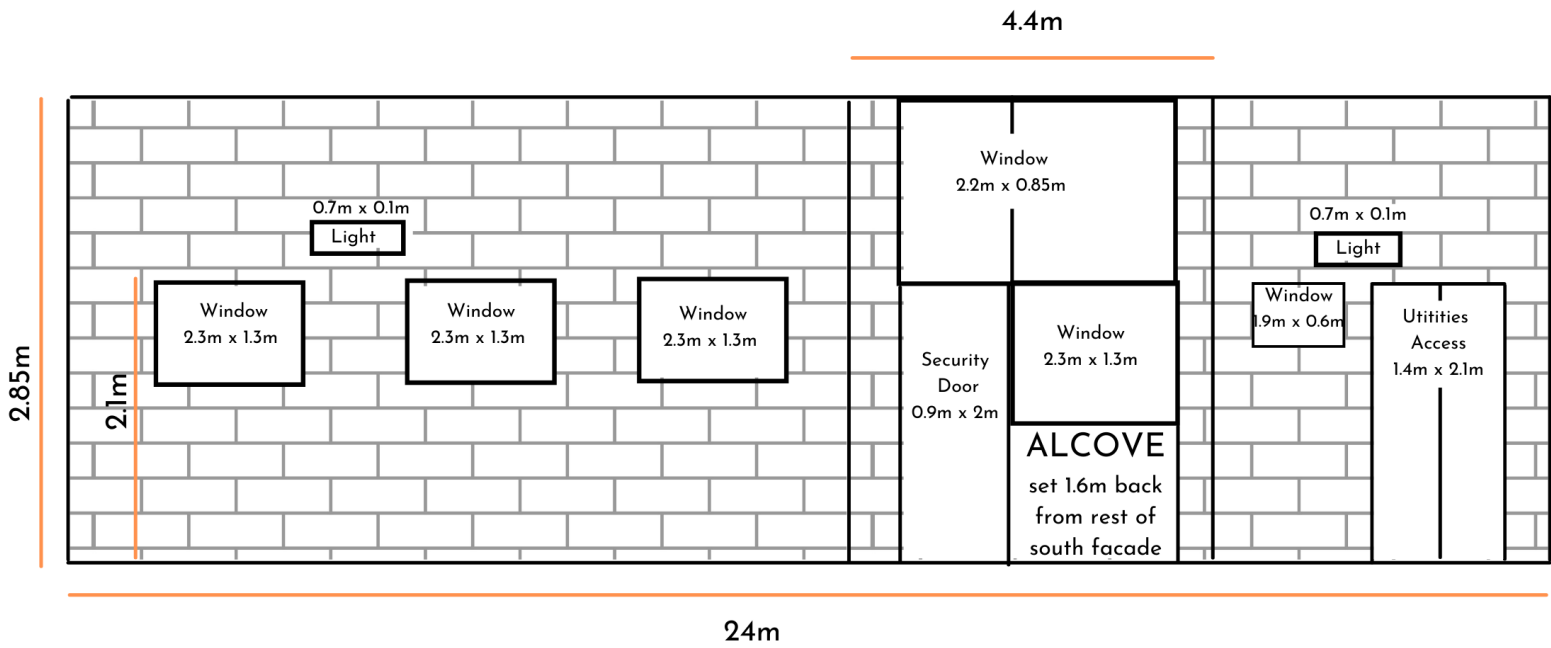
The security door is the main access door for regular user groups. This southern side of the building abuts the public open space reservation of Munro Reserve and community members often use the adjoining footpath to walk alongside the building.

At present the building is not particularly visible from the eastern approach via Scarborough Beach Road due to the lower topography of the site and adjoining Scarborough Beach Road.

All signage will be removed. Utilities Access are double doors that are currently painted but can be integrated into the mural design.



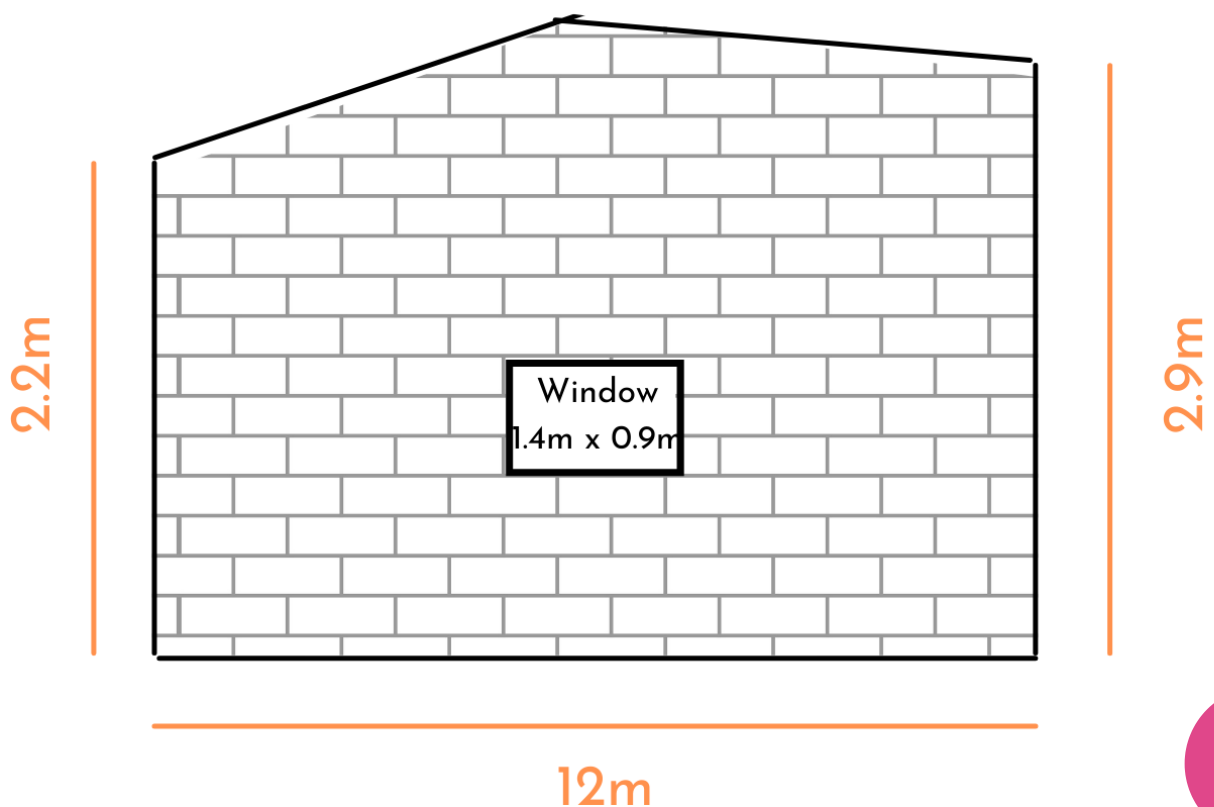
# Southern Façade



## Eastern Façade

Those accessing Doubleview House park in the carpark along the eastern side. Therefore has significance in terms of being the entry side of the building.

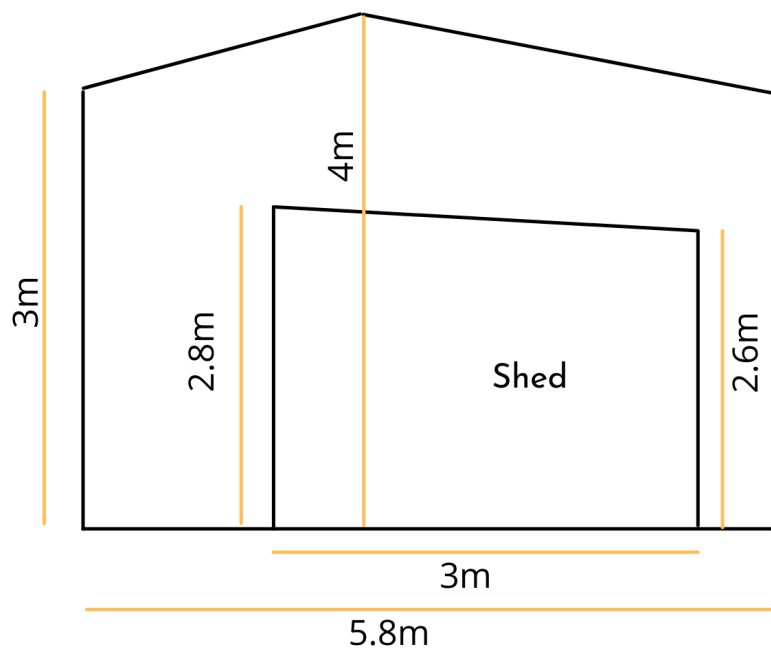
The large tree is approximately 0.5m away from the wall and 3 metres from the southern façade. There is one security window.



## Western Façade

The western façade along Hancock Street has previously been painted white and a sign installed on the corner portion. Sign is to be removed and a more contemporary and visually appealing sign installed to reflect the re-brand of Doubleview House.

A storage shed abuts the western façade and is intended to remain in place.



## Key Dates

Item	Date
Expression of Interest Open	16 <sup>th</sup> August, 2021
Expression of Interest Closes	6 <sup>th</sup> September, 2021
Selection group meeting <i>Short Listing artists decided</i>	8 <sup>th</sup> September, 2021
Shortlisted Artists notified	15 <sup>th</sup> September, 2021
Short listed Artists Refined Scope closes	11 <sup>th</sup> October, 2021
Selection group meeting <i>Final Artist Selection</i>	20 <sup>th</sup> October, 2021
Final Artist Notified	By mid-November, 2021
Community Announcement/Event	To be confirmed.
Project completion	31 March, 2022

## Themes and elements

- Meeting place
- Community and community involvement in aspects of the mural process
- Connection to the area, local environment and history.
- Togetherness and inclusivity



## Considerations

- Suitable materials should be selected by the artist with long lasting exterior paint and UV protection.
- We are environmentally sensitive and strive to support and promote sustainable practices, preference will be given to artists who can utilise materials with minimal environmental impact.
- Mural must address Southern façade and may also address the Eastern and Western façade of the building.
- Existing infrastructure (doors, windows, downpipes and other fixtures) should be sympathetically integrated into designs where possible. Windows on the Southern façade are important source of light to the house.
- Doubleview House will arrange for anti-graffiti coating to be applied to the mural artwork on completion.
- Artist must hold current public liability insurance.

## Artist Selection

The commissioned artist will receive an artist's fee. This fee needs to be inclusive of all costs associated with the development and creation of the works including:

- Artist fee for development and creation of work
- Travel time and costs
- All material including wall preparation, paints, equipment
- Any equipment required for Occupational Health and Safety compliance
- Public Liability requirements

Shortlisted artists maybe asked to develop their concepts further. Each artist/group of artists will be reimbursed \$500 as part of this process.

Doubleview House selection group comprising of staff, committee members and other local community organisations will be responsible for reviewing the EOI's received.

## Criteria

<b>Approach 40%</b>	<ul style="list-style-type: none"><li>• Artist's response to the brief</li><li>• Suitability of the approach to the overall project</li></ul>
<b>Previous Experience 30%</b>	<ul style="list-style-type: none"><li>• Demonstrated experience working on projects with similar scale and budget</li><li>• Proven ability to deliver projects on time and on budget</li></ul>
<b>Artistic excellence 30%</b>	<ul style="list-style-type: none"><li>• Quality of work as demonstrated through visual support material</li></ul>

## How to Apply

The following documentation should be submitted with your Expression of Interest:

- CV and biography or Artist's Statement
- Up to 10 images of recent works (within the last 10 years)
- Initial concepts for the mural (maximum 250 words)
- Itemised quote for costs
- Details of insurance

## How to submit your Expression of Interest:

Expression of Interests are to be sent to by email to [info@doubleviewhouse.com.au](mailto:info@doubleviewhouse.com.au)

## Further information

For further information please contact Chenoa Walsh or Fran Lockyer on 9446 2757 or [info@doubleviewhouse.com.au](mailto:info@doubleviewhouse.com.au)

## Office Hours

Monday - Friday 9.00am - 3.30pm

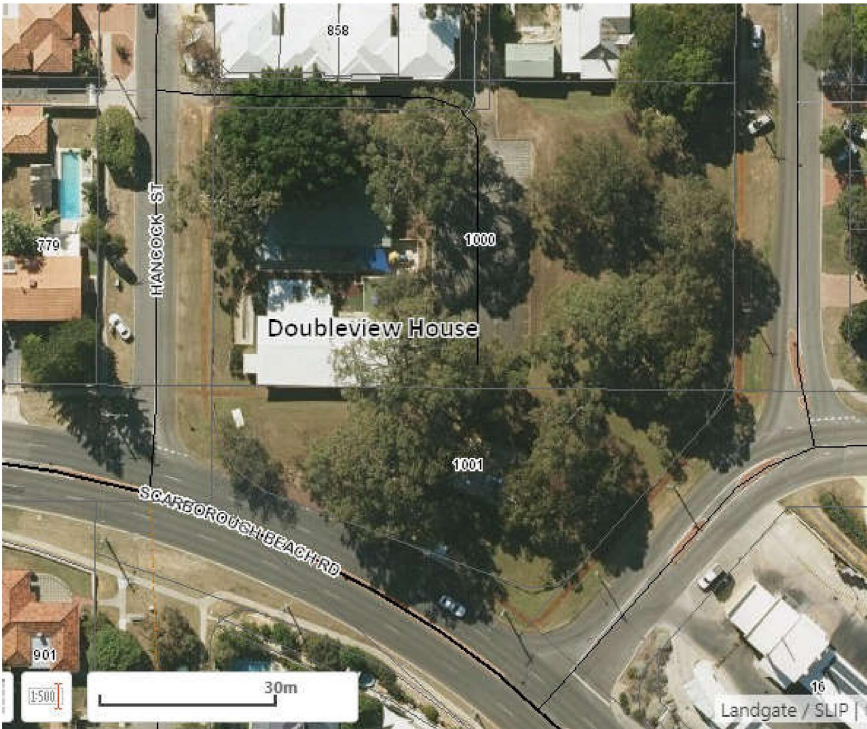


Figure 1: Aerial of Doubleview House and adjoining Munro Reserve, Doubleview

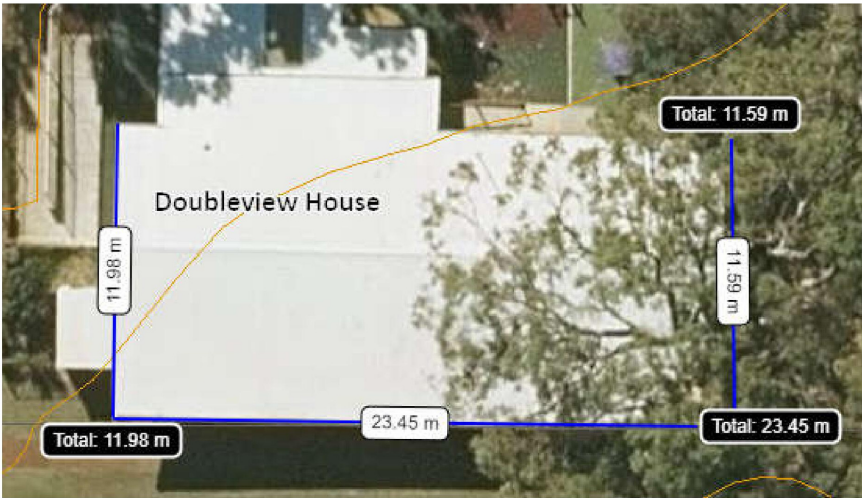


Figure 2: Approximate dimensions of building

ATTACHMENT 1



Figure 3: Google Streetview of Doubleview House from Scarborough Beach Road

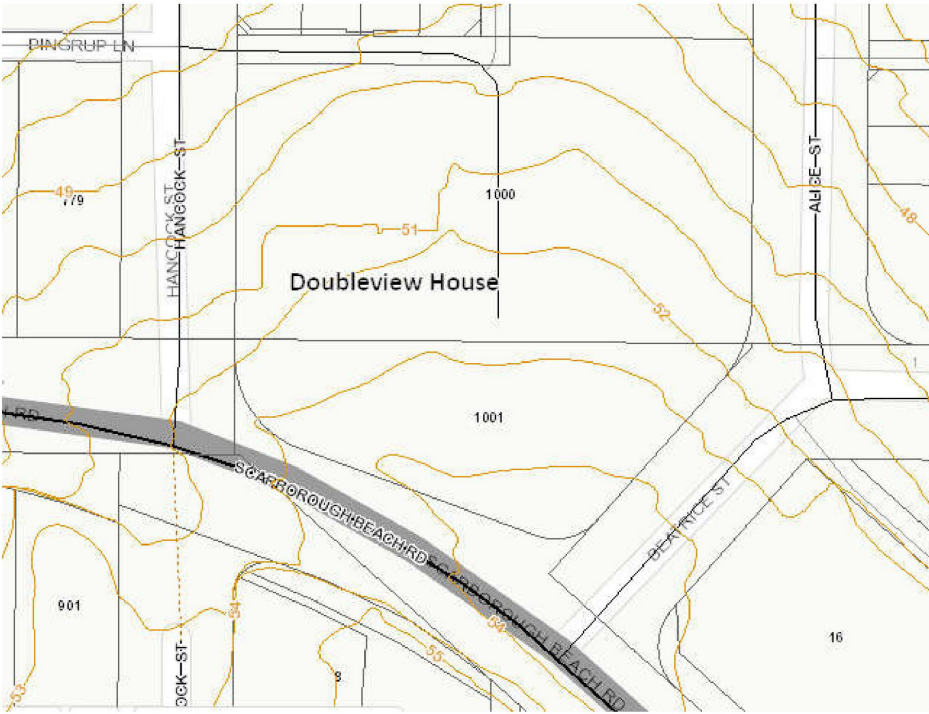


Figure 4: 1m contour intervals illustrating topography of site



T: 08 9446 2757

E: [info@doubleviewhouse.com.au](mailto:info@doubleviewhouse.com.au)

228 Hancock Street  
Doubleview WA 6018

[www.doubleviewhouse.com.au](http://www.doubleviewhouse.com.au)

